

DARWIN TO CAIRNS

EXPEDITION CRUISE

VOYAGE NUMBER #E1230912018



CRUISE STARTS SEP 12, 2023	CRUISE ENDS SEP 30, 2023	DURATION 18 DAYS	SHIP SILVER EXPLORER
--------------------------------------	------------------------------------	----------------------------	-----------------------------------

FEATURED OFFERS



DOOR-TO-DOOR FROM ⓘ

A\$17,400 PER GUEST

View more about this cruise:


<https://www.silversea.com/destinations/cruises-south-pacific-islands/darwin-to-cairns-e1230912018.html>

To view all terms and conditions please visit: <https://www.silversea.com/terms-and-conditions.html>










ALL-INCLUSIVE FARES

It's all included with Silversea. Yes, that's right. Everything.

Book by May 31st, 2023 and make sure you get the best fare and your preferred suite.

 **Prices valid until May 31, 2023, but may increase before subject to availability**

DOOR-TO-DOOR • FROM A\$17,400
Payment 85% refundable until 120 days pre cruise

-  PRIVATE EXECUTIVE TRANSFERS
-  INTERNATIONAL FLIGHTS - ECONOMY CLASS
or Business Class upgrade at reduced rates
-  AIRPORT TRANSFERS
-  HOTEL
-  Inclusions on board
- FOOD AND BEVERAGES
- BUTLER SERVICE
- SHORE EXCURSIONS
- EXPEDITION GEAR
-  HOTEL
-  AIRPORT TRANSFERS
-  INTERNATIONAL FLIGHTS - ECONOMY CLASS
or Business Class upgrade at reduced rates
-  PRIVATE EXECUTIVE TRANSFERS

Door-to-Door All-Inclusive fare has a flexible cancellation policy. Covid-19 protection policy always applied.

View more about this cruise:

<https://www.silversea.com/destinations/cruises-south-pacific-islands/darwin-to-cairns-e1230912018.html>


To view all terms and conditions please visit: <https://www.silversea.com/terms-and-conditions.html>

OFFERS FOR THIS CRUISE

All offers are subject to availability.



SUITE UPGRADES

 Expires on May 31, 2023

Enjoy suite upgrade(s) in selected categories, a \$1,000 Shipboard Credit per suite and a refundable 15% reduced deposit when you book by May 31, 2023. Available only on Door-to-Door All-Inclusive fare.



SAIL WITH US

 Expires on December 31, 2023

When you refer a friend who has never sailed with Silversea, and they book a new voyage, you BOTH enjoy A\$650 savings per suite. Offer ends December 31, 2023. Terms and conditions apply.

Itinerary & Excursions

🚢 19 PORTS

🏳️ 3 COUNTRIES


Join us on this 18-day adventure that takes in some of the most off-the-beaten-path destinations on the planet. Leaving Darwin, sail via a sea day for nine days of Indonesian adventure. Go deep into the culture of these islands, exploring the flora, fauna, culture and history of this extraordinary country, accompanied by our expert guides. Venture even further into the remote and remarkable as our next stop is Papua New Guinea, a unique country that has remained virtually untouched by tourism. Simply amazing.



View more about this cruise:

<https://www.silversea.com/destinations/cruises-south-pacific-islands/darwin-to-cairns-e1230912018.html>

To view all terms and conditions please visit: <https://www.silversea.com/terms-and-conditions.html>


Hotel
MON, SEPTEMBER 11



01 Darwin

AUSTRALIA

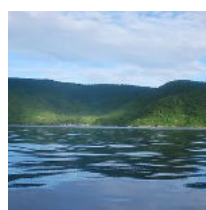
**TUE, SEPTEMBER 12
DEPARTURE 17:00**



02 Day at sea

INTERNATIONAL WATERS

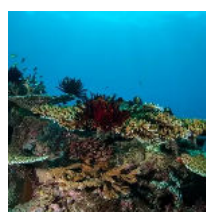
WED, SEPTEMBER 13



03 Tual

INDONESIA

**T HU, SEPTEMBER 14
06:30 - 08:30**



03 Pulau Nai

**INDONESIA
2 EXCURSIONS**

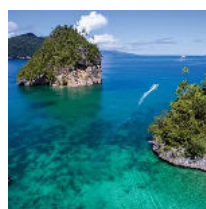
**T HU, SEPTEMBER 14
13:30 - 18:00**



04 Aiduma Island

**INDONESIA
2 EXCURSIONS**

**FRI, SEPTEMBER 15
06:00 - 12:00**



04 Triton Bay

**INDONESIA
1 EXCURSION**

**FRI, SEPTEMBER 15
13:30 - 17:00**



05 Den Weg Islands (Teluk Berau)

**INDONESIA
2 EXCURSIONS**

**SAT, SEPTEMBER 16
13:00 - 23:00**

View more about this cruise:

<https://www.silversea.com/destinations/cruises-south-pacific-islands/darwin-to-cairns-e1230912018.html>

To view all terms and conditions please visit: <https://www.silversea.com/terms-and-conditions.html>



06 Day at sea

INTERNATIONAL WATERS

SUN, SEPTEMBER 17



07 Pulau Miossu

INDONESIA
3 EXCURSIONS

MON, SEPTEMBER 18
05:30 - 12:30



08 Auri Islands (Cenderawasih Bay)

INDONESIA
2 EXCURSIONS

TUE, SEPTEMBER 19
06:30 - 21:00



09 Kwatisore, Cenderawasih Bay

INDONESIA
3 EXCURSIONS

WED, SEPT EMBER 20
05:30 - 17:00



10 Pulau Biak

INDONESIA

THU, SEPTEMBER 21
06:00 - 08:00



11 Vanimu

PAPUA NEW GUINEA
1 EXCURSION

FRI, SEPTEMBER 22
13:30 - 19:30



12 Ali Island

PAPUA NEW GUINEA
2 EXCURSIONS

SAT, SEPT EMBER 23
06:00 - 17:00



13 Kopar Village, Sepik River

PAPUA NEW GUINEA
2 EXCURSIONS

SUN, SEPTEMBER 24
07:00 - 11:30

View more about this cruise:

<https://www.silversea.com/destinations/cruises-south-pacific-islands/darwin-to-cairns-e1230912018.html>

To view all terms and conditions please visit: <https://www.silversea.com/terms-and-conditions.html>



14 Tuam Island

PAPUA NEW GUINEA
2 EXCURSIONS

MON, SEPT EMBER 25
07:30 - 13:00



15 Wagifa Island

PAPUA NEW GUINEA
1 EXCURSION

TUE, SEPT EMBER 26
13:00 - 23:00



16 Dei Dei Hot Springs, Fergusson Island

PAPUA NEW GUINEA
1 EXCURSION

WED, SEPT EMBER 27
05:30 - 12:00



16 Dobu Island

PAPUA NEW GUINEA
2 EXCURSIONS

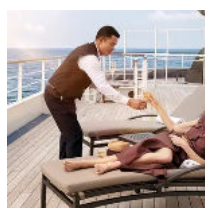
WED, SEPT EMBER 27
13:00 - 20:00



17 Samarai

PAPUA NEW GUINEA
1 EXCURSION

T HU, SEPT EMBER 28
06:30 - 13:00



18 Day at sea

INTERNATIONAL WATERS

FRI, SEPT EMBER 29



19 Cairns

AUSTRALIA

SAT, SEPT EMBER 30
ARRIVAL 07:00



Hotel

SAT, SEPT EMBER 30

The excursions are provided as a sample of what may be offered on this voyage and are subject to change. We are constantly updating our shore excursion programme with immersive and authentic experiences, so please do not hesitate to review your tour programme choice closer to your sail date. We invite guests to visit my.silversea.com for the most updated information.

SUITES

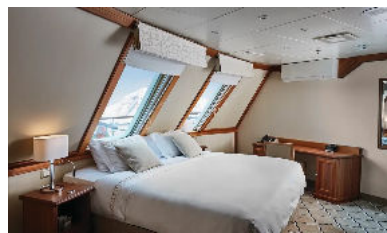
Silversea's oceanview suites are some of the most spacious in luxury cruising. All include the services of a butler thanks to the highest service ratio at sea and almost all have a private teak veranda so that you can breathe in the fresh sea air by merely stepping outside your door. Select your suite and Request a Quote - guests who book early are rewarded with the best fares and ability to select their desired suite.



OWNER'S SUITE

- Deck 7 of 7
- Suite size 67 sq.m.
- Veranda
- Living room

WAITLIST



GRAND SUITE

- Deck 7 of 7
- Suite size 57 sq.m. including veranda
- Veranda
- Living room

DOOR-TO-DOOR FROM
A\$64,100
PRICES ARE PER GUEST



SILVER SUITE

- Deck 5 of 7
- Suite size 39 sq.m. including veranda
- Living room

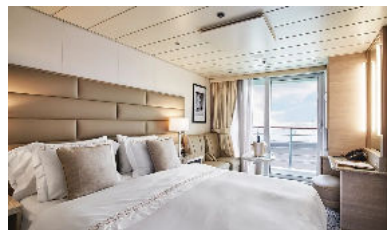
DOOR-TO-DOOR FROM
A\$57,800
PRICES ARE PER GUEST



MEDALLION SUITE

- Deck 7 of 7
- Suite size 37 sq.m. including french balcony
- Veranda

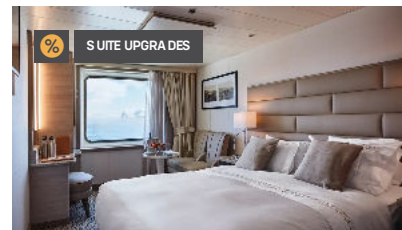
DOOR-TO-DOOR FROM
A\$54,100
PRICES ARE PER GUEST



VERANDA SUITE

- Deck 5 of 7
- Suite size 19 - 20 sq.m.

DOOR-TO-DOOR FROM
A\$28,000
PRICES ARE PER GUEST



VISTA SUITE

- Deck 4 of 7
- Suite size 18 sq.m.

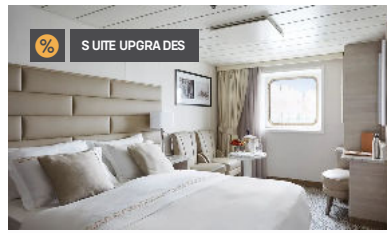
DOOR-TO-DOOR FROM
~~A\$20,400~~ **A\$19,600**
PRICES ARE PER GUEST



VIEW SUITE

- Deck 3 of 7
- Suite size 18 sq.m.

DOOR-TO-DOOR FROM
~~A\$19,600~~ **A\$18,100**
 PRICES ARE PER GUEST



EXPLORER SUITE

- Deck 4 of 7
- Suite size 16 -18 sq.m.

DOOR-TO-DOOR FROM
~~A\$18,100~~ **A\$17,400**
 PRICES ARE PER GUEST



ADVENTURER SUITE

- Deck 3 of 7
- Suite size 14 - 15 sq.m.

DOOR-TO-DOOR FROM
A\$17,400
 PRICES ARE PER GUEST

All-Inclusive Benefits

Fares shown are per Guest

- Butler service in every suite
- Unlimited Free Wifi
- Personalised service – nearly one crew member for every guest
- Choice of restaurants, diverse cuisine, open-seating dining
- Beverages in-suite and throughout the ship, including champagne, select wines and spirits
- In-suite dining and room service
- Onboard entertainment
- Onboard gratuities

Ship - Silver Explorer

Silver Explorer is designed to navigate waters in some of the world's most remote destinations. A strengthened hull with a Lloyd's Register ice-class notation (1A) for passenger vessels allows her to safely push through ice floes, meaning she can visit both of the earth's polar regions with ease. A fleet of 14 Zodiacs allows Silversea Expedition guests to visit even the most off-the-beaten path locations accompanied by the Expedition Team to provide insight and understanding to each unforgettable cruise adventure.

Ship Details: <https://www.silversea.com/ships/silver-explorer.html>

