

9 - 10 DAYS

BIRDSVILLE DESERT ESCAPE

OUR POPULAR FULLY INCLUSIVE TOUR FEATURING BIRDSVILLE,
WHERE THE CHANNEL COUNTRY MEETS THE DESERT



Big Red Sand Dune, Birdsville



Medium level of fitness required



TOUR HIGHLIGHTS

- Longreach Town Tour
- Australian Stockman's Hall of Fame Entry
- Qantas Founders Museum Entry
- Drover's Sunset Cruise with Smithy's Outback Dinner & Show
- Waltzing Matilda Centre Entry
- Historic Middleton Hotel & Cawnpore Lookout
- Min Min Encounter and Boulia Heritage Complex
- Channel Country Touring
- Famous Birdsville Hotel
- Sunset nibbles atop Big Red (Sand Dune)
- Inland Hospital Ruins
- Deon's Lookout and Dreamtime Serpent Art Sculpture
- Betoota and JC Hotel Ruins
- Sunset Sandhill nibbles, Windorah
- Eromanga Natural History Museum Guided Dinosaur Tour
- Quilpie Town Tour & Night Show
- The Bilby Experience
- Cosmos Centre Big Sky Twilight Session
- Historic Coronas Hotel Tour
- WWII Secrets Tour

Day 1 | SATURDAY | BRISBANE
Board the Spirit of the Outback train for your overnight rail journey to Longreach. Relax in your First Class cabin and enjoy all meals and onboard facilities. 10 Day tour guests only. (D)

Day 2 | SUNDAY | LONGREACH
10 Day tour guests will be met on arrival at Longreach Railway Station. 9 Day Tour guests will be met on arrival at Longreach Airport. Transfer to your accommodation for a welcome dinner and tour briefing.

2 nights Longreach Motor Inn or Albert Park Motor Inn (B L D)

Day 3 | MONDAY | LONGREACH
Enjoy an orientation tour of Longreach this morning. Visit the world-class Qantas Founders Museum, eloquently telling the story of the founding of Qantas. Discover the inspiring stories of our pioneering heroes at the Australian Stockman's Hall of Fame. Late afternoon, unwind on the Drover's Sunset Cruise with tasty onboard nibbles followed by a two-course table service dinner under the stars at Smithy's Outback Dinner & Show. (B L D)

Day 4 | TUESDAY | BOULIA
This morning we drive to Winton and uncover the story behind the song that lives in the hearts of all Australians, *Waltzing Matilda*. Follow a spectacularly scenic drive from Winton to Boulia via historic Middleton Hotel, built during the Cobb & Co. era. It was originally a changing station where tired horses were replaced with fresh horses. We stop at Cawnpore Lookout to view the stark flat-topped beauty of the surrounding Lillyvale Hills, before arriving in Boulia, the capital of the Channel Country.

Overnight Australian Hotel or Desert Sands Motel, Boulia (B L D)



Bedourie Shoe Sculpture



Camels, Boulia



Birdsville Hotel



Waltzing Matilda Centre



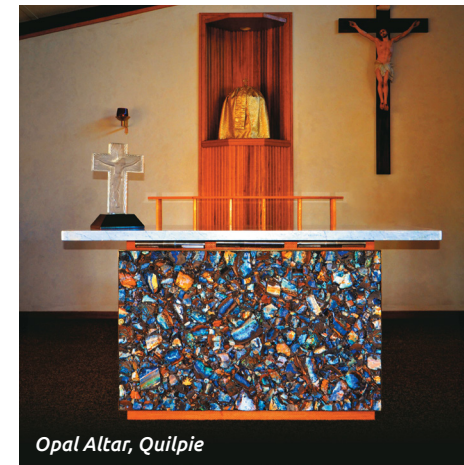
9 - 10 DAYS

BIRDSVILLE DESERT ESCAPE

Middleton



Dreamtime Serpent, Betoota



Opal Altar, Quilpie



Bilby Experience, Charleville

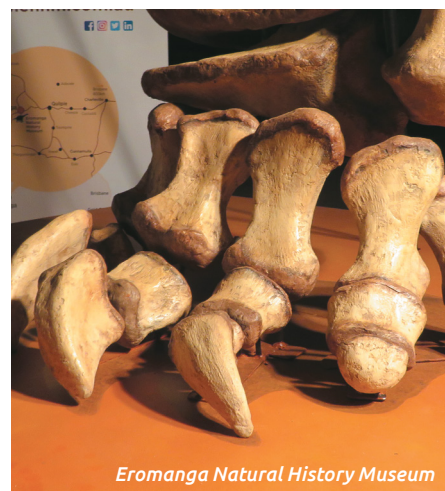
INCLUSIONS

- All en suite accommodation
- Travel by comfortable touring coach from Longreach to Charleville
- Touring with our Savannah Guides Operator driver and host
- All meals as per itinerary
- All entries/activities as per itinerary
- Longreach accommodation arrival and Charleville departure transfers
- One way economy flight Charleville to Brisbane
- One way first class Spirit of the Outback Rail Brisbane to Longreach (BDE10 only)
- One way economy flight Brisbane to Longreach (BDE9 only)

Day 5 | WEDNESDAY | BIRDSVILLE
This morning, visit the Min Min Encounter, a tribute to the famed mysterious Min Min Light phenomenon. Explore the Stonehouse Museum, one of the first homes built in Western Queensland, and see the impressive Marine Reptile Fossil exhibit. Witness spectacular 360-degree views from the Vaughan Johnson Lookout. Explore the remote town of Bedourie, located on a sand dune, overlooking the Eyre Creek floodplain. See the historic Royal Hotel, built in the 1880s with adobe bricks and still very much in its original condition. Visit the Carcory Ruins, a heritage-listed homestead built in 1877 and abandoned after years of drought. Keep a look out for a rare stand of Waddi Trees which occur in only a few places in the world. Arrive in Birdsville late afternoon.

2 nights Birdsville Hotel, Birdsville
(B L D)

Day 6 | THURSDAY | BIRDSVILLE
Join your guide for a town tour of Birdsville. See local Aboriginal artwork at the Wirrarri Centre then stand on the famous Birdsville Racetrack which hosts the annual 'Melbourne Cup of the Outback'. See the Burke and Wills Tree, said to mark one of Burke and Wills' final campsites. Take a stroll to Pelican Point Billabong with its abundant birdlife and tuck into a locally made pie at the Birdsville Bakery. Tonight we toast the glorious outback sunset from atop Big Red, a 40-metre-high sand dune marking the symbolic eastern edge of the Simpson Desert. (B L D)



Eromanga Natural History Museum

Day 7 | FRIDAY | WINDORAH
Today, we set off to see the Dreamtime Serpent Indigenous artwork; an impressive hillside installation created with gravel and gibbers. Visit Betoota, originally established to collect cattle tolls and later as a Cobb & Co change station. Take in spectacular views from Deon's Lookout and see the JC Hotel Ruins, once part of the township site of Canterbury. Arrive in Windorah, said to be the only place in the world where two rivers form a creek! Late afternoon, we'll take a short trip out of town to toast the sunset from beautiful wind-swept red sandhills. Have your cameras ready!

Overnight Western Star Hotel, Windorah (B L D)

Day 8 | SATURDAY | QUILPIE
Drive south along Kyabra Road to Eromanga, the furthest town from the sea, and home to Australia's largest dinosaur. Get up close to a 95-million-year-old dinosaur bone on the Australian Dinosaur Giants Tour at the Eromanga Natural History Museum. Wander the Interpretive Corridor and see the Multi-Media Theatre Experience. Tonight, settle in for the Quilpie Night Show screened under the stars; an engaging tell-all story of how Quilpie came to be – the struggles, the triumphs and the multi-generational pioneering dynasties.

Overnight Quilpie Motor Inn (B L D)

Day 9 | SUNDAY | CHARLEVILLE
This morning en route to Charleville we'll pass through Cooladdi, one of the smallest towns in Australia to retain its own postcode. On a tour of the Charleville Bilby Experience, see some super cute bilbies during their night-time activities in their nocturnal house. Learn about the amazing efforts made by this group of passionate volunteers to save the bilby from extinction. Tonight, see the incredible night sky brought into focus with the help of powerful Meade telescopes at the Cosmos Centre. Their experienced sky guide will enthral you with stories of the Cosmos.

Overnight Mulga Country Motor Inn or Rocks Motel, Charleville (B L D)

Day 10 | MONDAY | BRISBANE
On our guided tour of the USAAF top secret base, you'll visit intriguing historical sites, understand the reasoning behind choosing Charleville and learn about the highly classified computerised bomb aimer. Then, at the Royal Flying Doctor Service Museum, you'll get a better understanding of one of the outback's most iconic services. Step inside the famous Hotel Coronas, built during Charleville's wool industry boom. Join a guided tour with exclusive access to normally restricted areas of the hotel. Hear the rags to riches story of local character Harry Coronas, followed by lunch in the hotel dining room. Your tour concludes in Charleville with a transfer to Charleville Airport for your flight to Brisbane. (B L)



Windorah Sandhill

2023 DEPARTURES

16 April; 11 June; 17 September 2023 – (BDE9)
06 May; 02 September 2023 – (BDE10)

BIRDSVILLE DESERT ESCAPE	2023 TOURS	
	Twin Share	Single
9 Day Brisbane – Brisbane (BDE9) includes return flights as specified	\$5893* PP	\$6703* PP
10 Day Brisbane – Brisbane (BDE10) includes rail and flight as specified	\$5928* PP	\$6738* PP

*9 Day (BDE9) Tour price includes return flights. 10 Day (BDE10) Tour price includes one way economy flight and one way First Class overnight rail on the Spirit of the Outback between Brisbane and Longreach. Rail is based on Aust. Govt Senior Card holder fares. Please ask for other fare types. Subject to availability and airline booking conditions.